

NETZERO.CO.UK

**NetZero**  
GROUP

**NetScope**  
Autonomy

# NETSCOPE AUTONOMY

SUSTAINABILITY SIMPLIFIED

Certified



Corporation



# ABOUT US

Established  $\longrightarrow$  2019

Based in  $\longrightarrow$  Manchester

We are a

Certified



Corporation

Endorsed by



UNFCCC

## Our Clients



# SEAMLESSLY PRODUCE A CARBON FOOTPRINT IN A FEW CLICKS, WITH NETSCOPE AUTONOMY



## INTERGRATE

Accounting data from Xero, Quickbooks or Sage



## CATEGORISE

AI categorises & extracts activity data for Scope 1 & 2 and 3



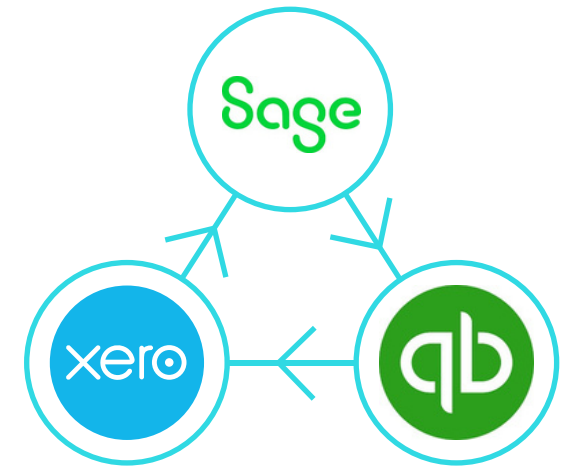
## CONVERT

Activity and spend data is converted to CO2e based on GHG Protocol

# WHAT IS NETSCOPE AUTONOMY?

NetScope Autonomy is our entry level Software as a Service (SaaS) product.

It seamlessly integrates with your accounting software (Xero, Sage or Quickbooks) so you receive a carbon footprint for your company within a few clicks.



## DATA INTERGRATION

### Uses existing Xero data

Financial data flows directly from Xero into NetScope with no extra input needed, leveraging existing data to kick-start carbon reporting.

## CARBON CALCULATION

### Transforms accountancy data into carbon numbers

Financial data flows directly from Xero into NetScope with no extra input needed, leveraging existing data to kick-start carbon reporting.

## DASHBOARD INSIGHTS

### Carbon data at a glance

The dashboard presents a simple, visual snapshot of clients' carbon footprint

# WHY SHOULD BUSINESSES REPORT CARBON EMISSIONS?

The “ABC” of sustainability:

**A**

## ACCESS TO CAPITAL

- Investor demand
- Enhanced financing
- Competitive advantage

**B**

## BUSINESS GROWTH & EFFICIENCIES

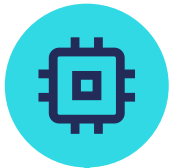
- Cost Savings Through Resource Efficiency
- Innovation and New Revenue Streams
- Customer Attraction and Retention

**C**

## COMPLIANCE ATTRACTION & RETENTION

- Meeting Legal Requirements
- Staying Ahead of Policy Changes
- Supply Chain Accountability

## WHY CHOOSE US?



### **VORTEX – AI POWERED INVOICE PROCESSING TOOL**

Automatically collect and report activity-based scopes 1 and 2 data giving a more accurate representation of a company's scope 1 and 2 footprint



### **FULLY AUTOMATED SOLUTION**

Easier, quicker and more accurate



### **SHARE YOUR FOOTPRINT AND COMMITMENT**

Use our page to share your carbon footprint internally & externally



# FEATURES

- Accounting software integration
- Scope 1 & 2 Carbon Footprint
  - Activity data\*
- Scope 3 Carbon Footprint
  - Spend data
  - c. 3.1 Purchased goods
  - c. 3.2 Capital goods
  - c. 3.5 Waste
  - c. 3.6 Business travel
- Sustainability News Feed
- Equity Ratio Analysis
- ESG Survey
- Data Explore Functionality
- Carbon Footprint Portal
- Engage Carbon Portal
- Solar Savings Calculator
- Net Zero Climate Partner Badge



# METHODOLOGY: EXEC SUMMARY

## NetScope Autonomy Methodology

NetScope Autonomy utilises accounting data from Xero, QuickBooks and Sage to estimate the carbon footprint from your business's activities, following the globally recognised **GHG Protocol Corporate Standard** methodology.

## What We Measure

- ✔ **Property Footprint:** NetScope Autonomy measures your company's property energy footprint using activity level data if available. This forms part of your company's scope 1 and 2 emissions, which are direct emissions from your operations and indirect emissions from purchased electricity.
- ✔ **Travel footprint:** NetScope autonomy measures your company's transport footprint from both company operated fleet vehicles, other travel for business purposes and employee commuting.
- ✔ **Indirect supply chain emissions:** Indirect emissions from your company's supply chain, including purchased goods and services, transportation, and other activities.

## Our Approach

- ✔ **Reliable Sources:** Conversion factors and methodologies are derived from government-approved resources and recognised carbon accounting sources.
- ✔ **Conservative Estimation:** Emissions are intentionally overestimated to avoid underreporting and ensure anticipated significant sources are not overlooked.

This robust and transparent approach empowers businesses to identify their environmental impact and take actionable steps toward sustainability. A full methodology document is available upon request.



SUSTAINABILITY SIMPLIFIED

NETZERO.CO.UK



# THANK YOU

-Net Zero Group

 [hello@netzero.co.uk](mailto:hello@netzero.co.uk)

 +44 (0)161 464 4946

Certified



Corporation